



LASERMACH™ Pro

**Painless Hair Removal,
Outstanding Comfort**

Intelligent laser hair removal platform

 **WINGDERM.**

LASERMACH™ Pro

Painless Hair Removal, Outstanding Comfort

Intelligent laser hair removal platform



Aesthetic and Professional operation system.



Sapphire Crystal 0℃ constant cooling, super and continuous protection of skin.



755nm\808nm\1064nm combined, suitable for all skin and hair.



12mm x 20mm big spot size;
Max. Output power to 1000W.



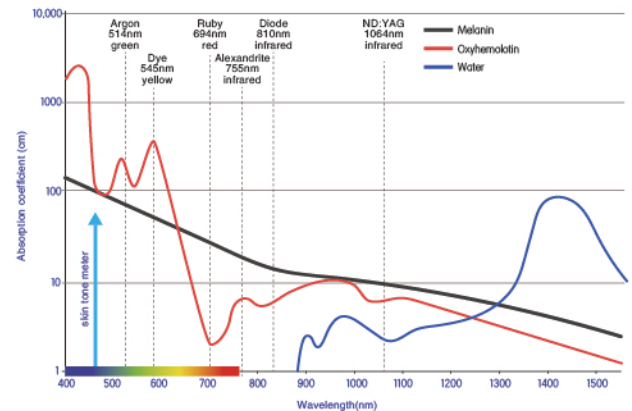
8 hours continuous working;



Applicator with OLED display, the cumulative energy of treatment and operation progress are visible;

Product Introduction

Lasermach™ Pro is an integrated super platform for hair removal which combines three-wavelength including 808nm, 755nm, and 1064nm. It is suitable for all kinds of skin color and hair color groups. It has both beauty version and professional version of dual-system user interface at the same time. When parameters are presetting, it can be customized for quick depilation operation and personalized depilation.



Laser combination of three wavelengths of 755nm, 808nm and 1064nm, which can cover all kinds of hair color of I-VI various types of skin. It has a more remarkable effect on darker skin and light hair.

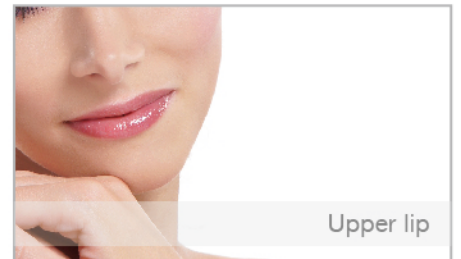


Aesthetic and Professional operation system



Applications

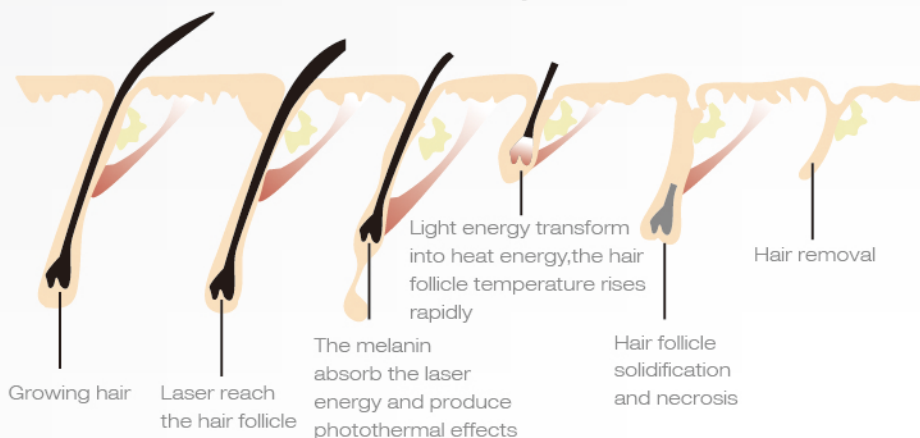
Lasermach™ Pro apply to all parts of the body (such as upper lip, oxtter, limbs, bikini area, etc.) to remove excess hair.



Theory

The intelligent laser depilation platform is based on selective photothermolysis. Hair follicles and hair shafts are rich in melanin. Melanin spreads over the cells of the hair matrix and it can transfer to the structure of hair shaft. The energy of diode laser can be selectively absorbed by melanin and then the temperature rises rapidly, which leads to the destruction of the dermal papilla and other hair follicle tissue, finally remove the hair.

Principle



Before & After



Technical Specifications

System

Applicator	L755	L808	L1064
Laser Wavelength	755nm	808nm	1064nm
Laser Type	4		
Electric Safety Standard	Class I Type B		
Pulse Width	5ms-400ms	5ms - 400ms	10ms - 400ms
Frequency	1Hz -10Hz	1Hz -10Hz	1Hz -10Hz
Spot Size	12mm x 20mm	12mm x 20mm	12mm x 20mm
Fluence	1-120J/cm ²	1-120J/cm ²	1-120J/cm ²
Laser Power	1000W	1000W	1000W
Preset Parameters	Yes		
SHR Mode	Yes		
Operation System	Aesthetic & Professional		
Cooling System	Compressor+Semiconductor+Air+Water		

Platform

Electrical	110-240VAC,50-60Hz; 2600VA
Machine size (LxWxH)	480mm x 534mm x 1062mm
N.W.	55Kg
External packaging size (LxWxH)	625mm x 655mm x 1290mm
G.W.	80Kg



Wingderm Electro-Optics Ltd.

Address: Room 105, No.6 Baohua Road, Hengqin New District, Zhuhai
City, 519000, Guangdong Province, China

Sales Office: Room 312,16th Building, No. 66 of Xixiaokou Road,
Haidian District, Beijing 100192, China

E-mail: info@wingderm.com

☎ (86 10) 62910812 🌐 <http://www.wingderm.com>

This brochure is only suitable for international area. ©

©2018 All rights reserved. Wingderm, the Lasermach™ is registered trademarks of Wingderm
Electro-Optics Ltd. and may be registered in certain jurisdictions.

L030030 A1